



INNOVATION THROUGH SYSTEM

Innovation and Excellence

www.oxfordassembly.com



OXFORD
ASSEMBLY AUTOMATION

INTRODUCTION

OUR EXPERTISE

WELCOME TO OXFORD ASSEMBLY AUTOMATION

Oxford Assembly Automation has witnessed the journey of transformation since 2013 and has adopted most modern technology, designs and machinery to ensure 100% satisfaction of the customers. we are the leading name engaged in manufacturing Special purpose machine, Assembly lines, Conveyor, control panel, jigs & fixture.

We have our own set up at Bhosari MIDC, Pune with 12,500 sq. ft. of workshed.

Oxford Assembly Automation is one of the Engineering Solutions venture. Has been offering Solutions in ASSEMBLY LINES, SPMS.

We offer comprehensive range of engineering services, which consistently meet the quality specifications of the customers.

Quality along with timely delivery of the solutions has been the hallmark. Our company lays great emphasis on innovation and quality. It works in Collaboration with its clients across the product development life-cycle by Constantly innovating its processes, upgrading team skill-sets and creating resources of well-trained engineers to meet the scalability required for the growing demands of the industry.

The diversity of our technology allows us to create innovations with system.

VISION & MISSION

Our vision of global sourcing is to be a leading of quality manufacturer & Supplier for of assembly machine & SPM for domestic & international markets.



To implement integrated automation systems which will validate customer's belief in automation solutions through innovative ideas, effective teamwork, competitive pricing and quality work.

WHY TO CHOOSE OXFORD ASSEMBLY AUTOMATION

- **EXPIERENCE**

We have a well experience team in building a assembly machine & SPM wich handles minute and complex parts.

- **QUALITY**

More care taking to build the product quality to achieve global standard. in house facility to ensure quality of the product.

- **TECHNOLOGIES**

Always ready to adept latest technology as applicable in design & software.

- **FACILITY**

We have tool room with CNC, VMC, Lathe, Drill, Wirecut and conventional machines. Design team with 2D & 3D software. Software developers for PLC, SCADA, Motion, Robot & Vision system.

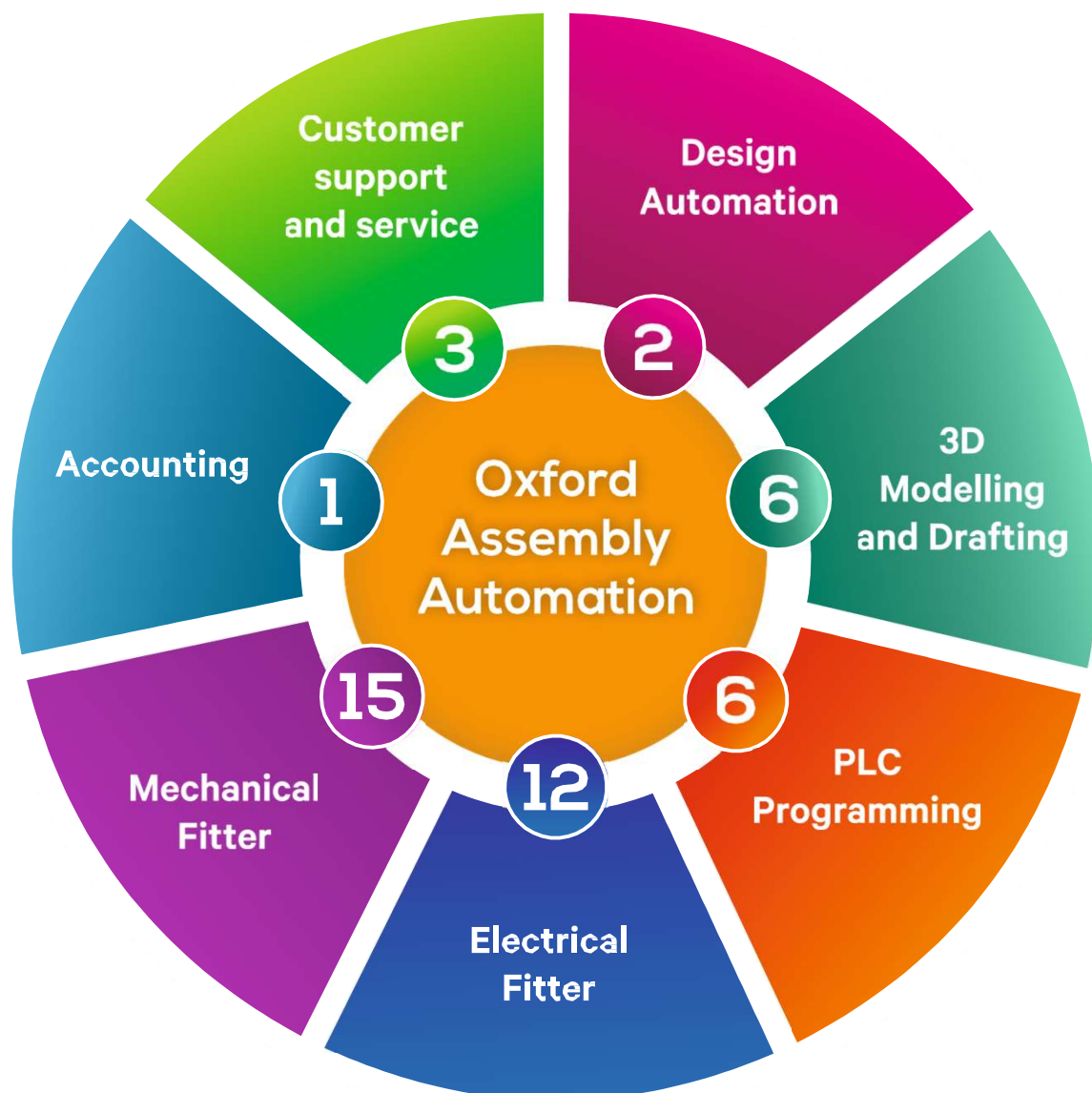
- **SERVICES & SUPPORT**

Dedicated team to attend any post Sales & Service requirement's well established documentation is followed for efficient support.

INDUSTRY WIDE SOLUTIONS



OUR SERVICES





OUR SERVICES

♦ **AUTOMOBILE**

We offer assembly machine for automobile sector. Like mechanical throttle body assembly line, break & clutch pedal assembly line, head lamp assembly line, oil pump assembly line, air filter assembly line, tensioner load testing machine, etc.

♦ **ELECTRICAL**

We offer assembly machine for electrical industries like switch assembly, socket assembly, temperature sensors assembly, connector assembly, contact assembly, terminal assembly etc.

♦ **PLASTIC / CONSUMER GOOD**

We offer assembly machines for various other industries like plastic, rubber, consumer goods etc.

♦ **BOTTLE CAPS**

High speed machines to assembly bottle caps/closures auto feeding, cutting and insertion of wad; assembly of inner and outer caps, camera inspection for quality.

♦ **MEDICAL**

We offer assembly solution to various medical device like iv catheter, syringe assembly, 3 way cock assembly etc.

♦ **PHARMACEUTICALS**

Few pharma products are auto injector assembly, machine bottle leaked testing machines, pfs assembly and labeling m/c, ejector assembly m/c, safety slider assembly m/c etc.

MACHINERY CAPABILITIES

Sr. No	Machine Details	Make	Qty.	Range	Accuracy (mm)
1	Vmc Machine	STM	1	1200 x 600 mm	0.02
2	Milling machine	G.vernier	1	1000x 450 x 450 mm	0.05
3	M1TR with DRO	Micromill	2	850 x 350 x 350 mm	0.02
4	CO2/ ARC welding m/c	Local	2	-	
5	Drilling machine	Local	1	UP to 35 mm	
6	Air compressor	Local	1		
7	Surface Table	Local	1	630x630 mm	
8	Digital Height Gauge	Becker	1	600 mm length	

IN HOUSE FACILITY

VMC MACHINE



MITR MACHINE



MILLING MACHINE



SURFACE GRINDING MACHINE

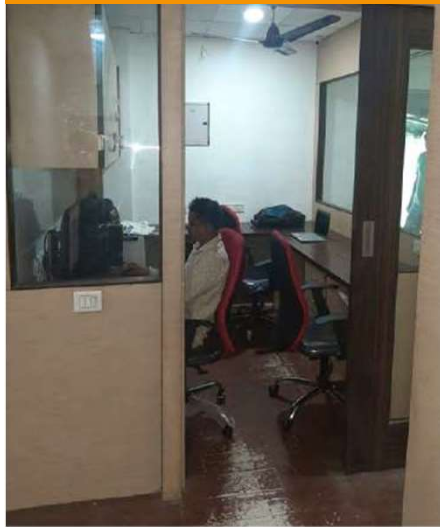


OFFICE INFRASTRUCTURE

DIRECTOR DESK



PROGRAMMING DEPT.



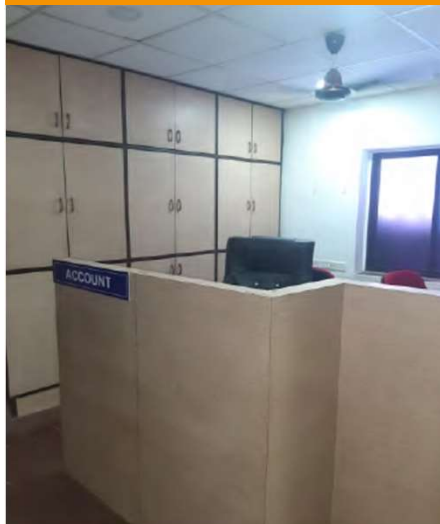
MARKETING DEPARTMENT



CONFERENCE ROOM



ACCOUNT DEPT.



DESIGN DEPT.



OUR PRESTIGIOUS CUSTOMER

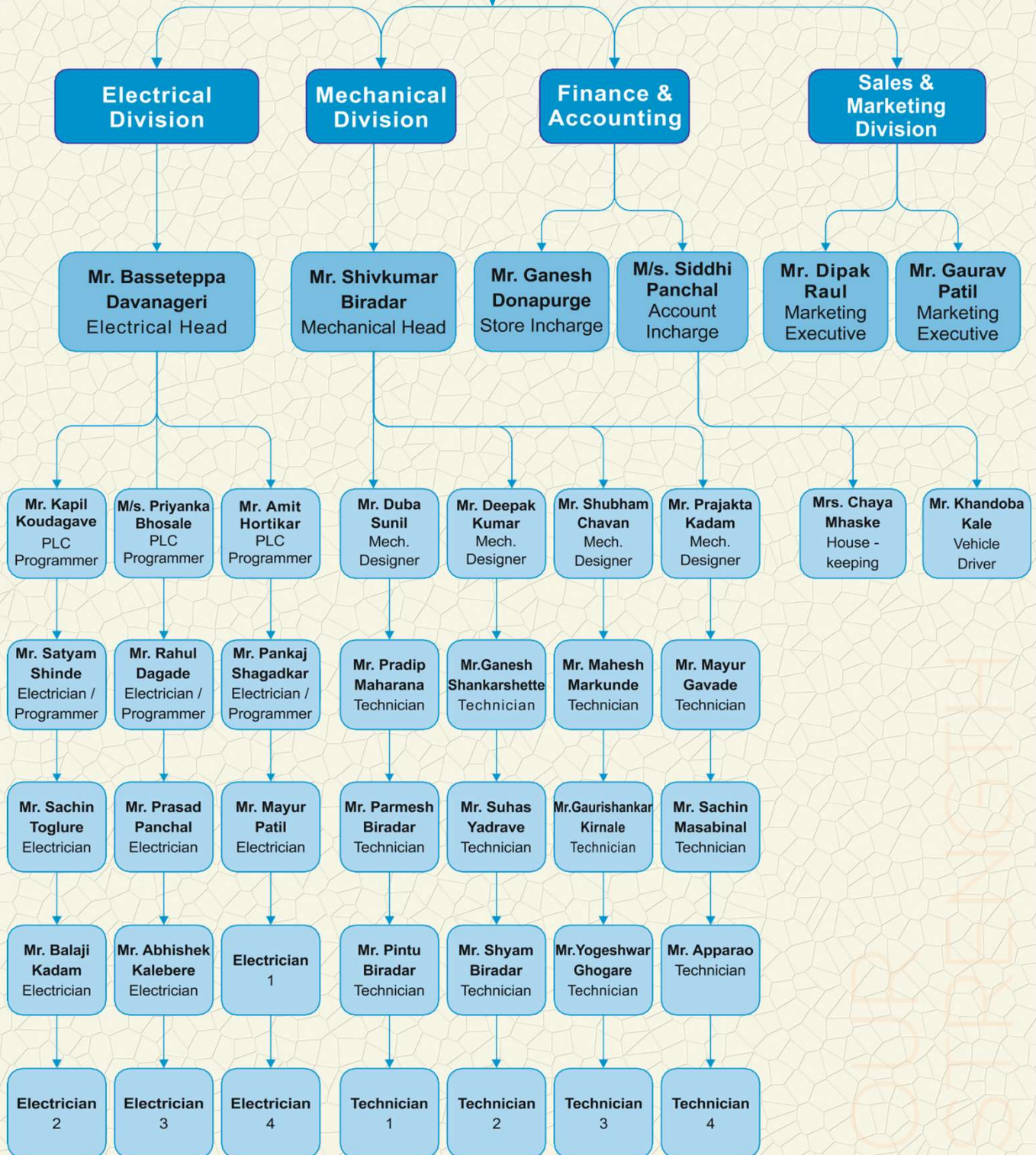
Our Prestigious Customer



OUR STRENGTH



Mr. Vijay Biradar
Director



SHOP FLOOR



The background is a solid orange color with a faint, repeating pattern of white line-art icons. These icons include various mechanical components like gears, pistons, and robotic arms, as well as abstract symbols like puzzle pieces, a lightbulb, and circuit-like lines. The overall theme is engineering and technology.

Our Successfully **Completed Projects**



A756 THROTTLE BODY ASSLY LINE



5QQ & 5QR VW BRAKE & CLUTCH PEDAL ASSLY LINE



K5 FUSE BOX ASSLY LINE



A768 OIL PUMP ASSLY LINE



A919 TENSIONER ASSLY LINE



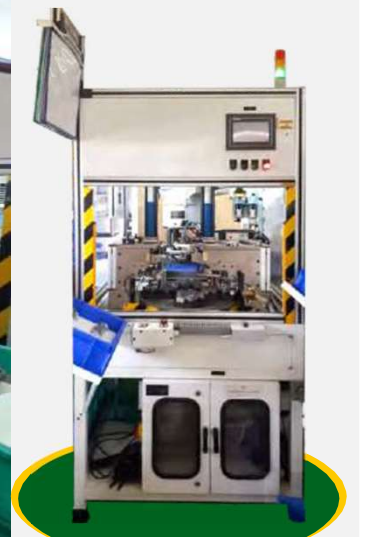
TIGOR EV BRAKE PEDAL ASSLY LINE



A505 & A678 TENSOINER ASSLY LINE



A789 OIL PUMP ASSLY LINE



A106 PLATE SCREWING MACHINE



Break Pedal Auto Torquing Machine



MULTI HEAD LAMP ELECTRICAL TEST MACHINE



MULTI HEAD LAMP LEAK TEST MACHINE



MULTI HEAD LAMP M3 HOT INSERTION MACHINE



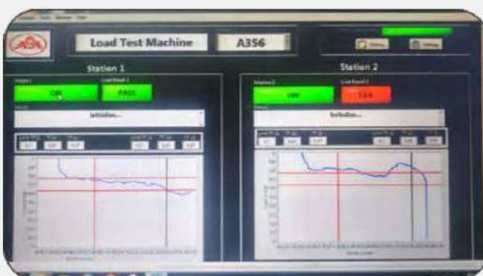
X451 & Q5 BRAKE PEDAL ASSLY LINE



BRASS BUSH & ADJUSTER PRESSING MACHINE



A356 PRIMING+ LAOD TESTING + TRACEBLITY MARKING MACHINE



A668 PRIMING &

LOAD TESTING MACHINE



Z101 IDH + TIGOR IDH ASSLY MACHINE



FUSE BOX VISION CHECKING MACHINE



GASKET PRESSING MACHINE



TENSIONER ROTARY PLUG PRESSING + HEIGHT CHECKING + DOT PUNCHING



UNIVERSAL FLOW TESTING MACHINE



WINGER IP ASSLY MACHINE



X451 PUSH BUTTON BODY & LIGHT JEWEL ASSLY MACHINE



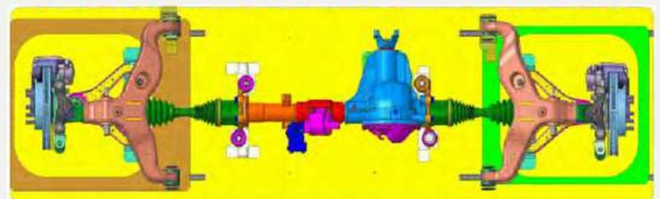
TENSIONER UNIVERSAL LOAD & TORQUE TESTING MACHINE



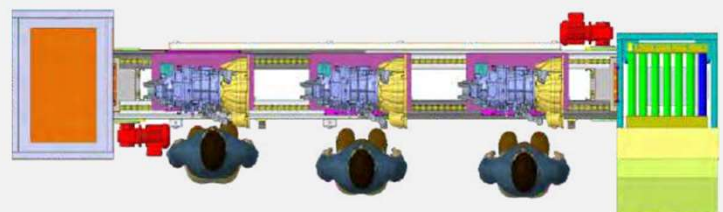
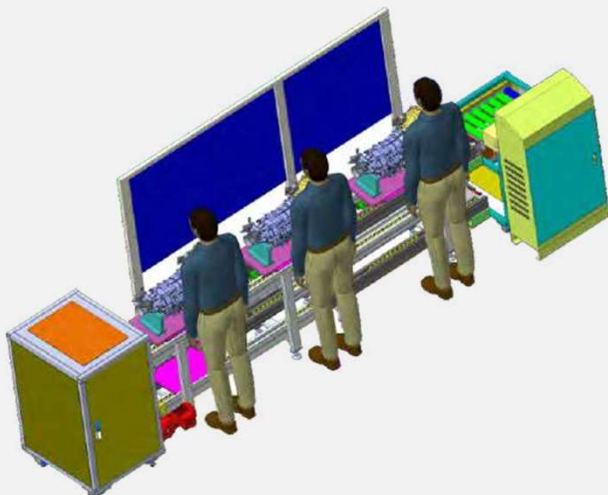
BELT CONVEYOR FOR PART FLOWING WITH LINE



FRONT AXLE ASSEMBLY LINE CONVEYOR



GEAR BOX ASSLY MOVING CONVEYOR WITH LOADING UNLOADING STACKER





OXFORD
Innovation and
Excellence

Contact Details



OXFORD
ASSEMBLY AUTOMATION

Innovation and Excellence

Corporate Office & Factory Address

S-Block, W-178/A, Bhosari MIDC, Pune-411 026. MH, India

Contact

Mr. Vijay Biradar (Director)

Mob No. 98605 54663, 84839 84663

Mail us

Director : director@oxfordautomation.co.in

Marketing : marketing@oxfordautomation.co.in

Design : design@oxfordautomation.co.in

Accounts : accounts@oxfordautomation.co.in

Bank Details

A/c No. - 50200012589939

IFSC Code : HDFC0002524

HDFC BANK- Pimple Saudagar, Pune-411027.

www.oxfordassembly.com